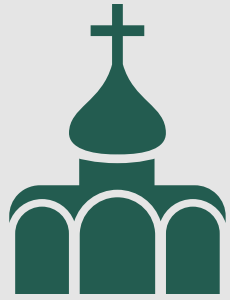


# KINGSTOWNE BY-THE-NUMBERS 2020



80

**HOUSEHOLDS**

*on average worshipping/connecting weekly*



## GROWTH EVEN DURING COVID



15

**NEW MEMBERS**

4

**BAPTISMS**

2

**CONFIRMATIONS OF FAITH**



20

**LIVE ON YOUTUBE**

30 **LIVE ON FACEBOOK**



**WORSHIP & DISCIPLESHIP**

102

**ONLINE & IN-PERSON VOLUNTEERS**



376

30+ **ON DEMAND**



**AVERAGE WEEKLY VIEWS**

47

*average*

**SERMON PODCAST LISTENS**

8,008 **DOWNLOADS THIS YEAR**



*average in-person*  
**WORSHIP AT THE PARK**

56

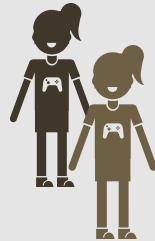


*people in*  
**COMMON TABLES**

58



24 **CHILDREN IN 1ST EVER VBS**



*people in*  
**BIBLE STUDIES & DEEP DIVES**

40

15 *students active in*  
**YOUTH GROUP**



*people in*  
**RACIAL & LGBTQ+ JUSTICE CLASSES**

28



## MISSION, MERCY & JUSTICE



75

*residents at Eleanor Kennedy Homeless Shelter served a hot meal in Jan and Feb*



4,100

*lbs of food donated to support food insecure families and seniors through Lorton Action (LCAC)*



875

*lunches packed and distributed to 125 food insecure children in May, June, July and August during the pandemic*



500

*dollars donated through wine festival sponsorship and paint class fundraisers for Lorton Action (LCAC)*



2,600

*dollars raised to purchase ALL needed virtual learning supplies for Hawk Pantry/ Hayfield pyramid*



27

*participated in our virtual PRIDE parade*



150

*persons living along Route 1 will be served Christmas dinner at Rising Hope*

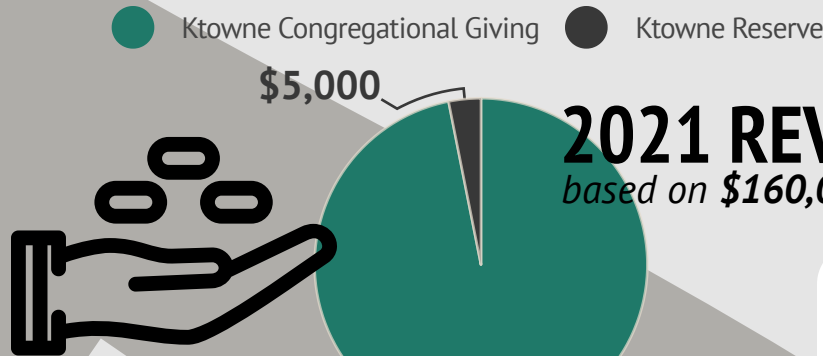
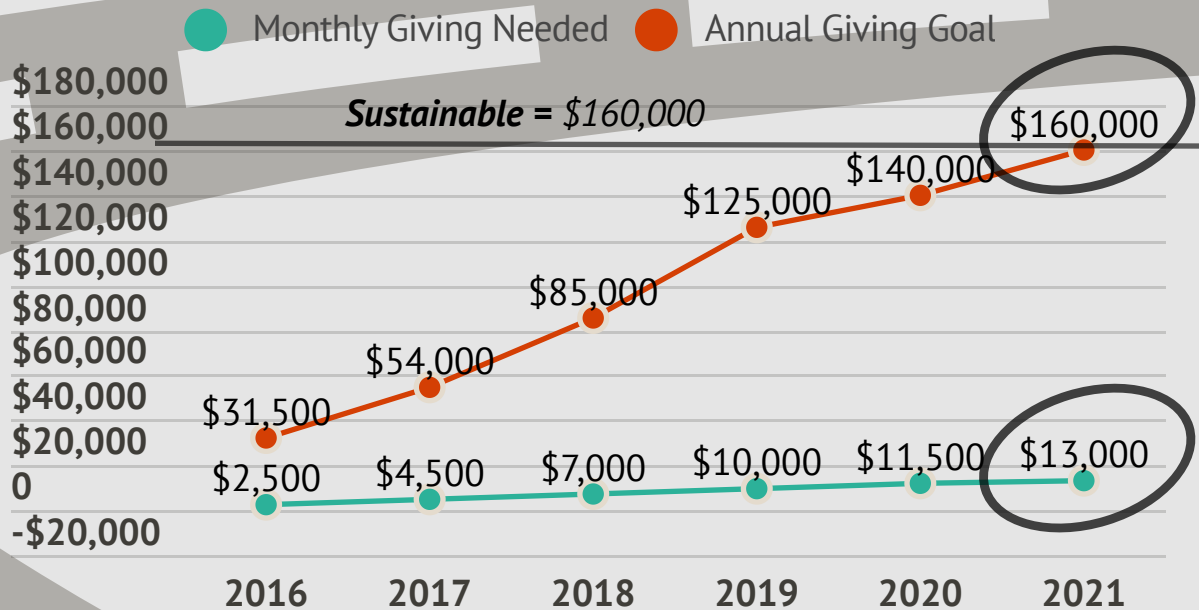
# KINGSTOWNE FINANCES AT-A-GLANCE

## 2021 STEWARDSHIP GOALS

- \$160,000 total congregational giving in 2021**
- \$13,000 monthly in pledged and scheduled/auto-pay gifts to ensure cash flow**
- Every member/regular attendee gives regularly**
- 60 pledges from congregation in 2021**
- Continue to reduce online giving fees expenses by asking givers to cover their 1-3%**

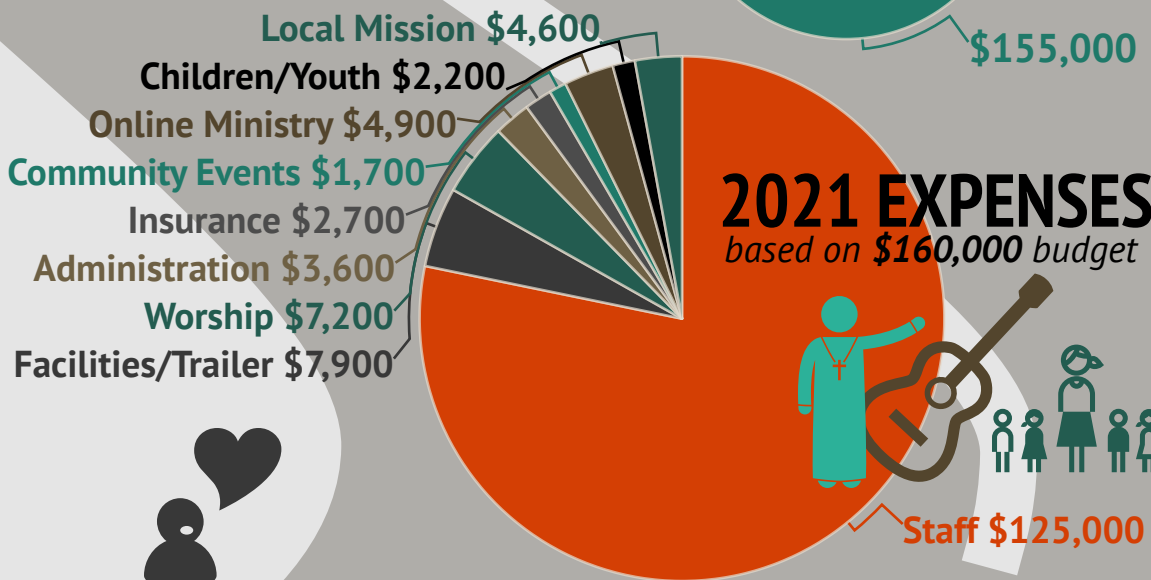
## ROAD TO SUSTAINABILITY

*Goal: To thrive on our own in 2021, our 1st year of financial sustainability.*



## 2021 REVENUE

*based on \$160,000 budget*



## DID YOU KNOW?

*In our first year on our own as a financially sustainable, independent church, it will cost us:*

**\$400 / wk** to staff and resource children/youth ministry

**\$500 / wk** to staff and resource music/online/tech ministry

**\$250 / wk** in new finance and insurance expenses

**\$150 / wk** during COVID to rent park amphitheater